



Inquiries – Private Tours

Kris McGowen
Sales Representative
807-632-1224
www.KrisMcGowen.com

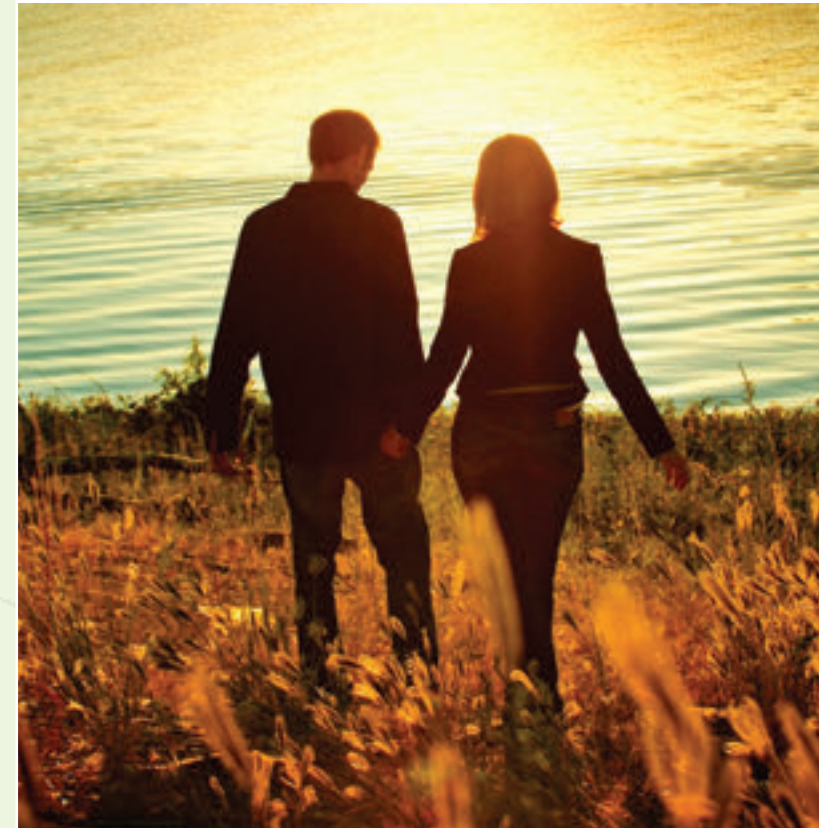
Becky Forester
Real Estate Broker
807-626-3011
www.BeckyForester.com



enchanting
elegant
exceptional

Discovery

Life at Whiskeyjack provides endless opportunities to enjoy Thunder Bay's magnificent natural landscape. With several properties fronting on the Fort William Country Club, golf enthusiasts can readily enjoy a day on the green before retiring to the clubhouse for dinner with friends. Hikers and outdoor enthusiasts may opt to explore nearby scenic trails while skiers can hit the slopes of Loch Lomond or visit the Kamview Nordic Centre for a cross-country adventure. Whatever the season, there is an activity for everyone at Whiskeyjack.

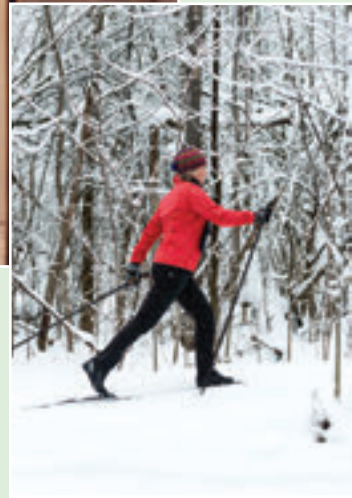


Welcome Home

community
tranquility
luxury



whiskeyjack 
ESTATES



Suburban Estate Lots

Whiskeyjack offers residential building lots of a size, character and diversity that are not currently available within our city limits. With no two lots exactly alike, each estate lends its own unique charm to the scenic mountain landscape.

Free from restrictions, your home design and landscaping possibilities at Whiskeyjack are endless. The natural ambiance and spacious lots are sure to complement your personal design choices.

Whether you prefer golf course frontage, mountains in your backyard or the privacy of neighbouring green-space, your dream estate awaits you at Whiskeyjack.

character
class
convenience

Community

Whiskeyjack is ideal for families of all sizes. With its sprawling lots and idyllic rural location, Whiskeyjack offers the perfect combination of privacy and community.

Beauty

With panoramic views of the Nor'Wester Mountain range, Whiskeyjack presents a uniquely beautiful living experience. The picturesque valleys and peaks provide a gorgeous backdrop for outdoor entertaining, backyard barbeques or relaxing afternoons on your porch. At Whiskeyjack Estates you'll find nature at your doorstep.

Convenience

Located on Foothill Drive, just off Mountain Road; Whiskeyjack is quietly nestled in the foothills of the Nor'Westers and offers rural tranquility with urban luxury. The subdivision is a short distance from schools, restaurants, recreational areas and exercise facilities and is a mere fifteen minute drive to the city. Whiskeyjack is country estate living with convenience.

